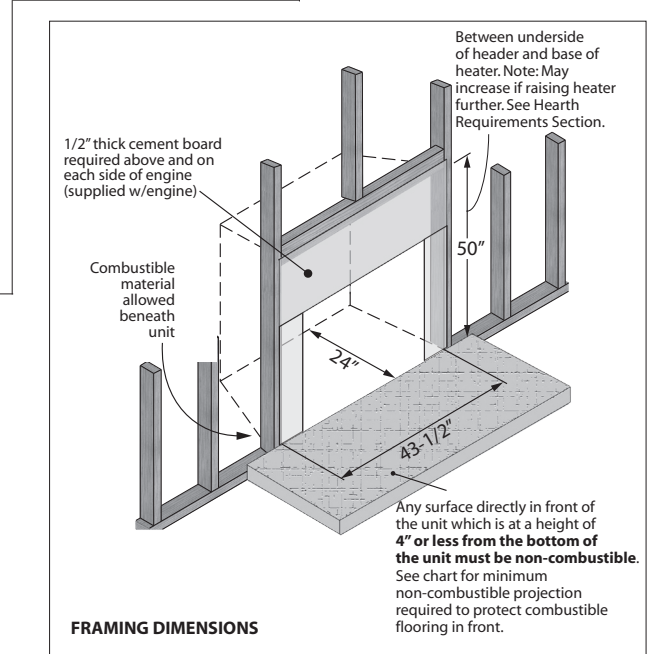
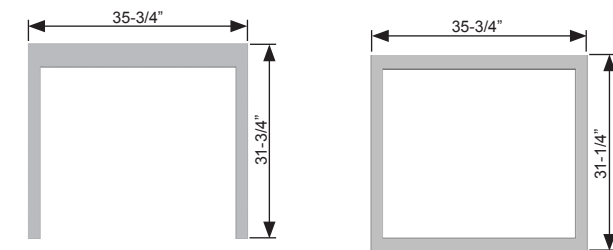


Framing

When using certain optional accessory mantels and trims, the heater **must** be installed **flush with the surface of the finished** hearth or floor and the wall finish surrounding the unit **must be limited to the 1/2" cement board with 1/2" material abutting to it** (no additional material on top).

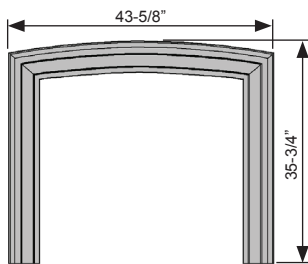


Optional Trims Outer Dimensions

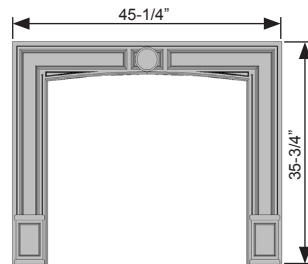


Backing Plates (Flush to Hearth)
1240BPK—3-sided Plate, no door
1215FDV—FenderFire Double Doors
1220FSV—FenderFire Single Door
1240DKA—Alhambra Doors

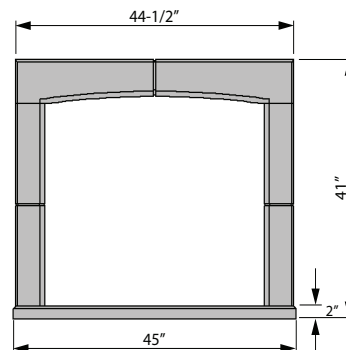
Backing Plate (4-Sided)
1241FBK—4-sided Plate, no door



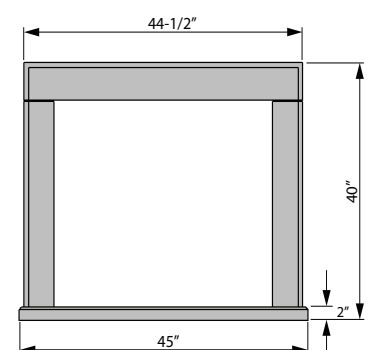
614CVI—Arched Cast Iron Surround
(requires a 3-sided Backing Plate)



615CVI—Cast Iron Surround
(requires a 3-sided Backing Plate)

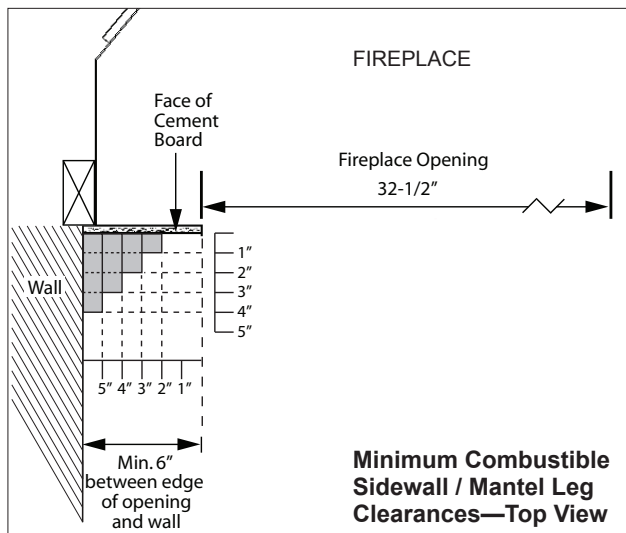
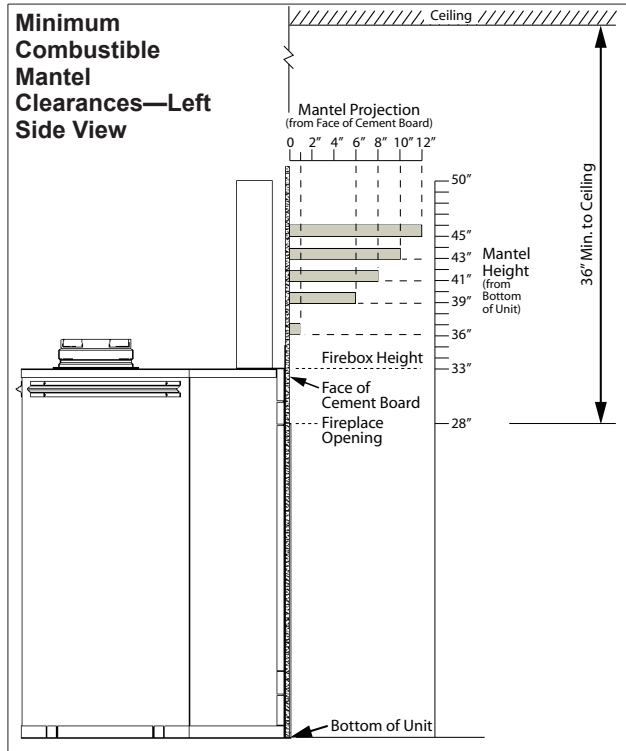


616STK—Arched Stone Trim
(requires a 3-sided Backing Plate)



617STK—Stone Trim
(requires a 3-sided Backing Plate)

Mantel Clearances



Hearth Requirements

